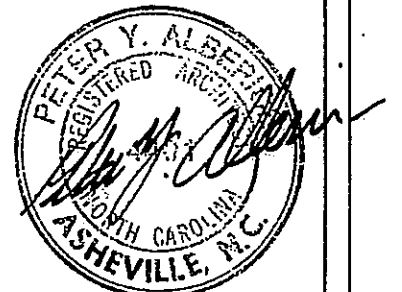
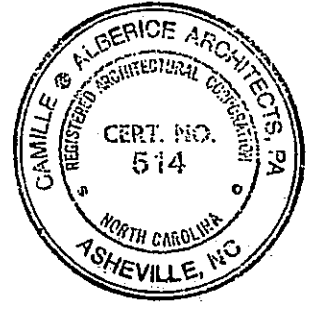


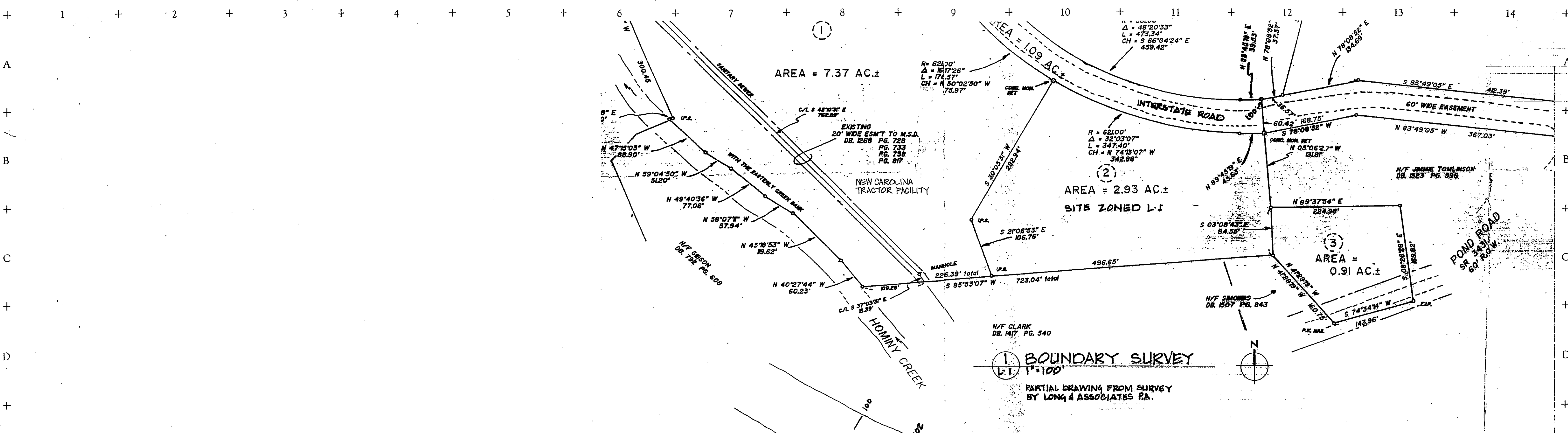
# Camille Alberice

ARCHITECTS, P.A.

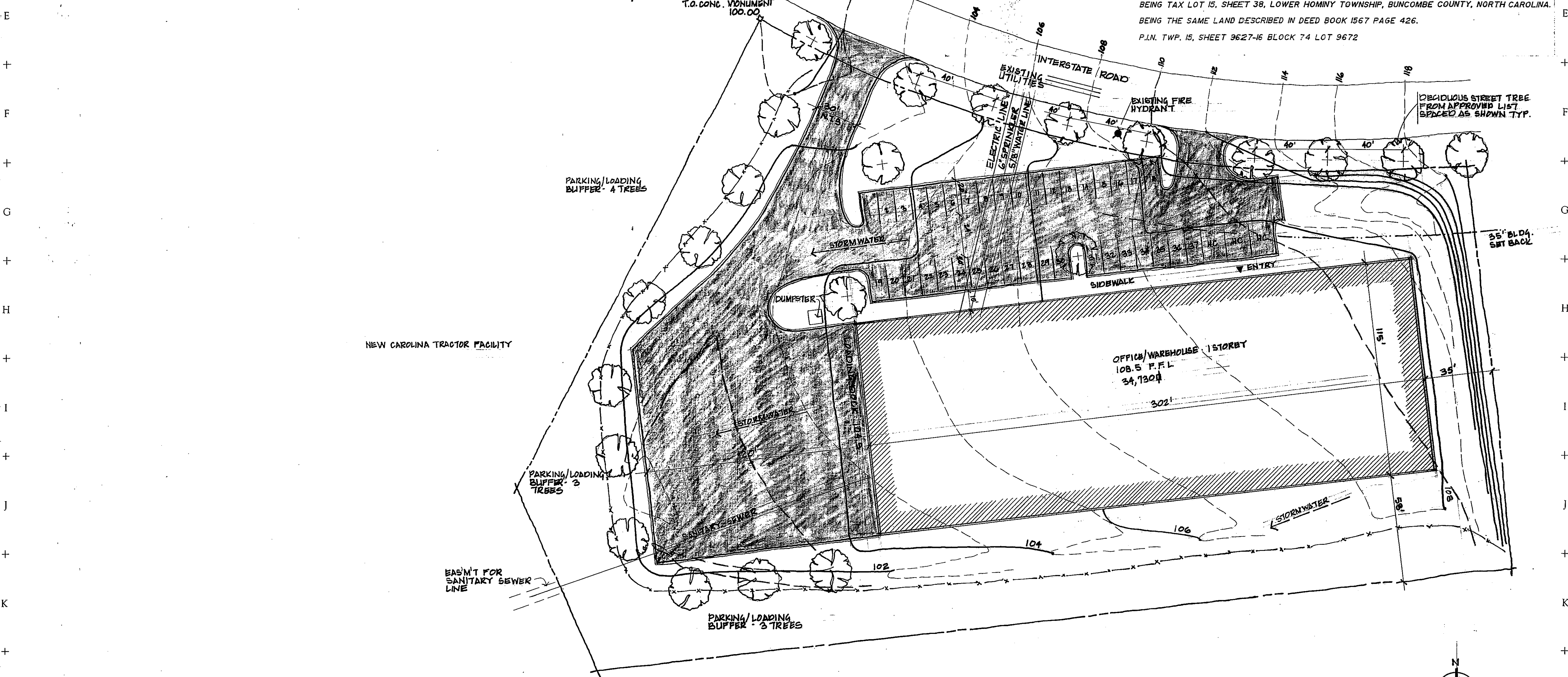


PRELIMINARY SITE PLAN  
 GENERAL MEDICAL CORPORATION  
 INTERSTATE ROAD ASHEVILLE, N.C.  
 S & S ASSOCIATES - DEVELOPERS

### MATERIALS KEYING



BEING TAX LOT 15, SHEET 38, LOWER HOMINY TOWNSHIP, BUNCOMBE COUNTY, NORTH CAROLINA  
 BEING THE SAME LAND DESCRIBED IN DEED BOOK 1567 PAGE 426.  
 P.L.N. TWP. 15, SHEET 3627-16 BLOCK 74 LOT 9672



### GENERAL NOTES

- 37'-9" x 20' STANDARD PARKING SPACES.
- 3 - 13' x 20' HANDICAPPED PARKING SPACES.
- SYMBOL LEGEND:  
 - - - - - PROPERTY LINE  
 - - - - - SLOPE FINISH  
 - - - - - NEW CONTOUR LINE  
 - - - - - EXISTING CONTOUR LINE  
 - - - - - 35' BUILDING SETBACK LINE

John Wootie  
 Asheville Building Solutions, Inc.

REVISED AND RESUBMITTED 20 AUGUST 1992

DRAWING TITLE SITE PLAN	DATE 3 AUGUST 92
KEY PLAN	SHEET NO. L-1 OF 1