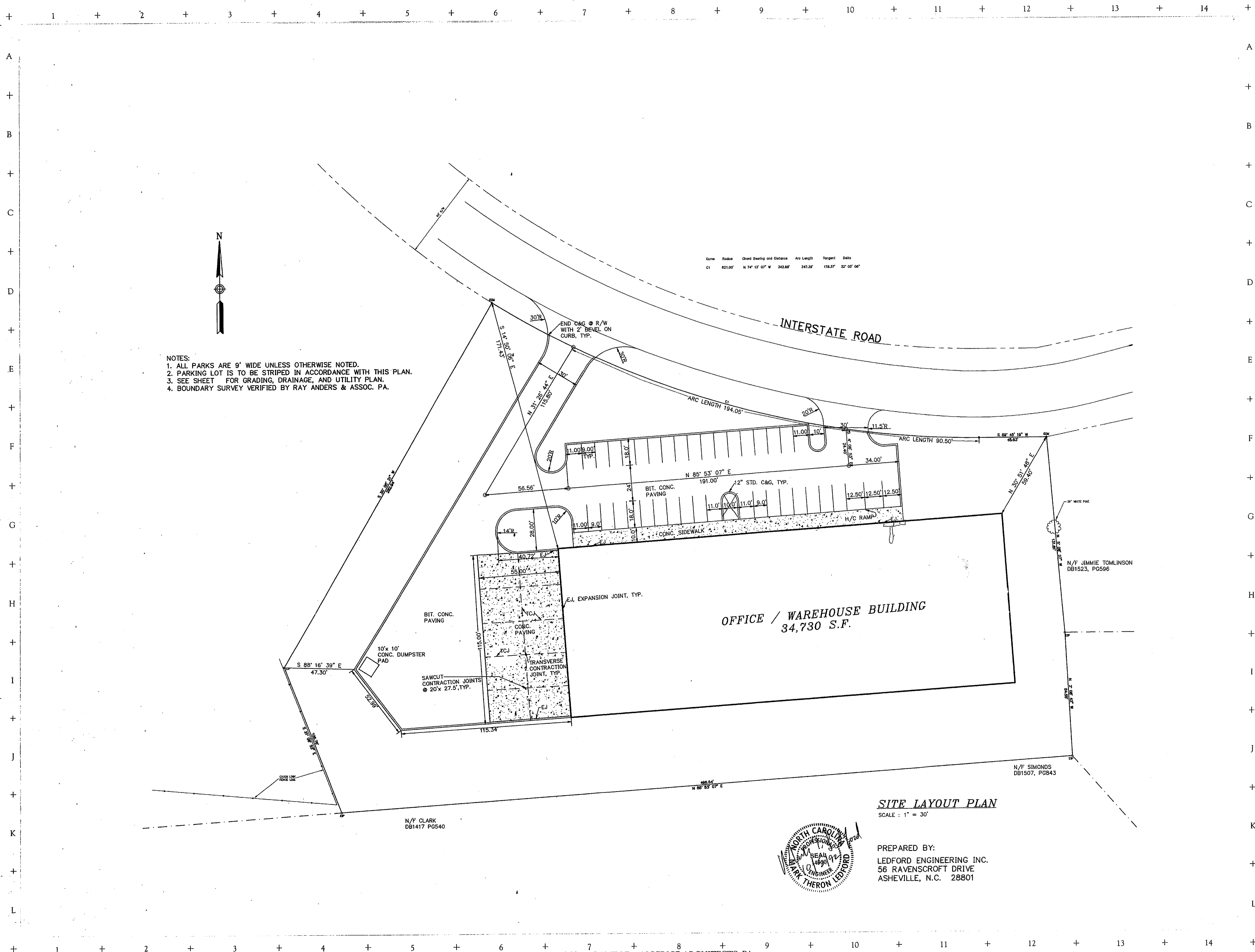


Camille · Alberice

A R C H I T E C T S , P A



- NOTES:
1. ALL PARKS ARE 9' WIDE UNLESS OTHERWISE NOTED.
 2. PARKING LOT IS TO BE STRIPED IN ACCORDANCE WITH THIS PLAN.
 3. SEE SHEET FOR GRADING, DRAINAGE, AND UTILITY PLAN.
 4. BOUNDARY SURVEY VERIFIED BY RAY ANDERS & ASSOC. PA.

A New Office/Warehouse Building for:
General Medical Corporation
 Interstate Road, Asheville, N. C.

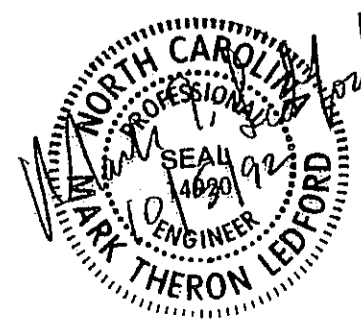
MATERIALS KEYING

GENERAL NOTES

SITE LAYOUT PLAN

SCALE : 1" = 30'

PREPARED BY:
 LEDFORD ENGINEERING INC.
 56 RAVENSCROFT DRIVE
 ASHEVILLE, N.C. 28801



DRAWING TITLE SITE LAYOUT PLAN	DATE 5 OCT, 1992
KEY PLAN	SHEET NO. L-1 OF